

FEBRUARY 2025

# the lifestyle

Elevating Experiences, Enriching Lives.

**GETTING  
TO KNOW  
SUE**

**SERVICE  
DELIVERY**

*Exciting changes,  
new positions*

**CABINET  
ART  
PROJECT**

*Congratulations*



THE SUPPORTED  
LIFE STYLE  
HAURAKI TRUST





The Supported  
Life Style Hauraki Trust  
608 Queen Street  
PO Box 524  
Thames  
Tel 07 868 5038

[info@suplife.org.nz](mailto:info@suplife.org.nz)  
[www.suplife.org.nz](http://www.suplife.org.nz)

## communication

Below is the list of planned communication with whanau for 2025. We will be holding online Zoom meetings along with the Life Styler newsletter.

**Whanau Contact Zoom Meetings**  
March, July, September, December  
**The Life Styler**  
February, May, November



## CHRISTMAS PARTY AT THE FARM



The Trust Christmas party at Wires Road farm in December was another amazing celebration.

A great team of helper elves arrived early to set up. Then from 10:30am Life Stylers, family and staff poured in.

We were entertained with live music, from our own homegrown Gary Comrie and Uncle Waka and they were accompanied by our special guest Misty. And of course, our own Life Stylers adding in their own musical talents.



Santa made a spectacular arrival on his Harley Davidson and Mr Whippy was not long after him. There were games; egg and spoon races, pin the beard on Santa, photo booth, swimming in the river and a water sprinkler to cool off under. Then the helper elves magically packed everything up again. Many hands made light work.



# PAORA *Family Time*

Patrick, Bernie and Paora set off for Ohakune where they were staying in a B&B. On the way down they stopped at Taumarunui visiting 3 of his siblings and 9 nieces and nephews, staying longer than anticipated as Paora was having such a good time.

Once they arrived at Ohakune they settled into the accommodation where Paora loved the fireplace. It rained the next day, so they had a day at home. The following day they contacted family in Raetihi and arranged to gather his younger brother and 2 nieces and nephew to go to Paora's mothers grave in Otoko. He managed to get up the hill and it was very emotional, however, Paora was happy to be there. They ended the day by visiting his other nieces and nephews.

The final day he farewelled his whanau in Raetihi and set off home. They stopped in at Taumarunui where Paora was all smiles as the whanau had put on a big party for him. He finished the day off with a nice beer (0%).

Once home he talked about the trip the next day which indicates he enjoyed himself very much.



## GETTING TO KNOW SUE



**Growing up in the small town of Pukekohe, (was small in my day) instilled in me a strong sense of family and community.**

When I was eight I had perthes disease in my left hip. I was put on a frame and spent 18 months in Wilson Home. Living at Wilson home gave me my first insight into people with mixed abilities. I look back on this time with fond memories.

My career journey has been diverse with a variety of roles. With the latter 10 years working in aged care as a Village Manager. I came to the Trust in February 2024 as Manager of Services, with the portfolio of ACC, IDT team, Medical Leads, Teams 1,4 and 5.

I now move into my new role as Outcome Lead Development. I retain the oversight of ACC, IDT, and Medical leads, while expanding my responsibilities to include training and whanau/family advocacy.

As our whanau/family zoom meetings were a success last year, we are looking forward to more this year. Look out for dates in March, July, September and December.

Feedback is important, therefore, I am working on our family survey, and I am aiming to have it ready by March/April.

There will be many events this year and we are looking into live streaming some of these events, so you can watch at home.

I am here to support you with any issues or concerns you may have. If you are having an issue, I encourage you to first contact the staff directly. You should have a list of phone numbers for staff. Please let me know if you haven't and I can ensure you get one.

I work Monday to Friday, and you can either email [smcmillan@suplife.org.nz](mailto:smcmillan@suplife.org.nz) or phone me on 027 242 2401.

I will endeavour to respond to your query within 48 hrs. Of course, no issue is needed to talk with me, I am happy to have a chat and I always welcome ways we can improve. I look forward to getting to know more families this year.

**[smcmillan@suplife.org.nz](mailto:smcmillan@suplife.org.nz) 027 242 2401**



# SERVICE DELIVERY

Welcome back to our Life Stylers and staff. We hope you had a wonderful break and are ready for a fantastic and busy year ahead.

2025 is shaping up to be an incredibly exciting and transformative year, with many new and exciting changes already taking place in our Service Delivery area.

## Introducing the Wayfinder Leads

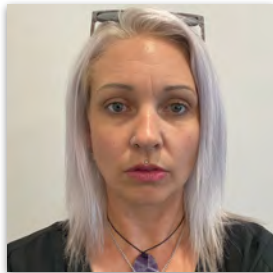
**Amy Menzies**  
(6:30am to 3:00pm)

Amy has been at the Trust for 8 years. She brings her leadership skills to the role, which she developed from working as a Team Leader.



**Paula Styles**  
(6:30am to 3:00pm)

Paula has worked for the Trust for 11 years, starting as a Support Worker and serving as an Onsite Lead for the past two years. She brings a wealth of knowledge to her new role.



**Ben Thomas**  
(2:00pm to 10:30pm)

Ben has been involved with the Trust for around 11 years, taking a break in the middle to pursue a career in the paramedic field.



**De King - Wayfinder Farm Co-Ordinator,**  
working with our team at the farm.



**Charlotte Currill - Wayfinder Co-Ordinator,**  
handling rosters and scheduling.



**Matt Vendt - (the new role of) Active Outcomes Lead,**  
Enhancing Life Stylers quality of life through activity-based initiatives.



**Mardi Anderson - Wayfinder Lead Planner,**  
working with all Life Stylers, whanau, and staff to create support plans from our Life Stylers telling their story.

In addition, we are pleased to introduce the following roles and staff members

# SERVICE DELIVERY



**Sue McMillan - Outcomes Lead Development,**  
overseeing the ACC portfolio, Interdisciplinary Team, Medication Leaders,  
Training Initiatives, and Whanau Liaison.



**Makanoa Kiripatea - Outcomes Lead Navigator,**  
overseeing the MSD/Whai Kaha portfolio, Wayfinder Co-Ordinator, Active  
Outcomes Lead, Wayfinder Planners, and Life Styler Advocacy.



**Davina Peke - Wayfinder Lead Community,**  
working with our vocational spaces, networking with the community, and  
working on a volunteer initiative.



Letitia Hogan  
**Nurse**



Kate Webb  
**Nurse**



Sharon Wright  
**Occupational Therapist**

## IDT TEAM

Our nurses oversee all clinical aspects, engage with Thames Medical, Unichem Pharmacy, and external specialists while guiding support staff. Furthermore they run wellness clinics on Tuesdays and Thursdays. Sharon oversees aiding equipment or environments and engages with external resources such as Speech Language Therapists and Physiotherapists when required.

# OPERATIONS *Update*



From March 2025 we will be changing the way IT systems and services are delivered at the Trust. For over 13+ years we've been fortunate to have Mario van de Geer single-handedly manage everything to do with IT. This is no small task; the Trust's IT systems are complex and

unique, including staff computers, shift phones, internet across all Trust properties, security cameras, medical alarms, online security, servers,

back-up servers, cloud-based servers and so much more.

Mario is moving to an exciting new role and that change has led to us transitioning to a new IT provider called CodeBlue. CodeBlue have a team of engineers, analysts, and customer service professionals available 24/7. Mario and I have been working in the background to ensure a seamless transition.

We wish Mario all the best in his new role and thank him unreservedly for all that he has done for the Trust in his time here.

**Dan Verry**  
**Executive Manager of Finance and Operations**

## Disability Support Services

Nau mai, haere mai. Find information for disabled people, whānau, support people, and providers



About Disability Support Services Disability Support Services (DSS) is a business group in the Ministry of Social Development. It is responsible for providing essential support to around 50,000 disabled people and their whānau, as well as equipment and modification services for approximately 100,000 New Zealanders.

In other important news, the Disability Support Service (DSS) unit of MSD is launching an extensive consultation process to gather community input on the future of DSS services. If you have a few minutes to spare, this is a great opportunity to share your thoughts on how disability services should evolve.

The goals of this consultation include:

- Establishing clearer assessment and allocation processes
  - Exploring options for changes to flexible funding
- You can participate in person or online. Your feedback will build on the DSS survey conducted late last year. For more information, including dates and locations, please visit the DSS website: <https://www.disabilitysupport.govt.nz/consultation>. We will be holding workshops to ensure that Life

Stylers are able to have their say. Your input will help the Government make informed decisions to stabilise and enhance disability support services. If you encounter any issues with the link or know others who might be interested in participating in the consultation, please feel free to share this information. Consultation closes 24th March 2025

**[info@disabilitysupport.govt.nz](mailto:info@disabilitysupport.govt.nz)**



# SOME HIGHLIGHTS



Fun on the Farm



Rachel O trip to Whitianga.



Andrew D  
Worker of  
the Year  
2024



Sean B sunflowers



Simon M & Chris B weekend  
to Auckland



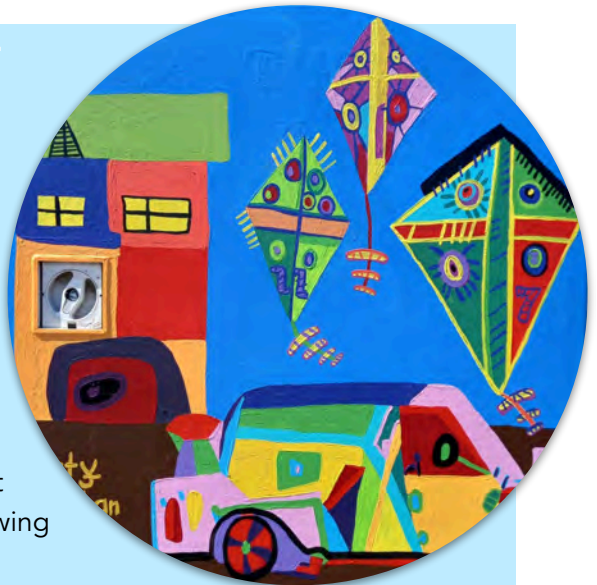
Jeanie C  
Life Styler  
of the Year  
2024



# C H O R U S

## CABINET ART PROJECT

A huge congratulations to Arty C, Jonathan R, and Jack M, who were supported by our Artsider Tutors in completing their Chorus Cabinet Art Project. The Thames Community Board spent considerable time reviewing all the entries, and Arty, Jonathan, and Jack's design was selected as the winning entry for 153 Banks Street. A lot of thought, time, and effort went into creating this masterpiece, so once again, congratulations to them!



(Reply from TCDC) "The cabinet looks fantastic, it will bring lots of joy to anyone passing by – a great addition to Thames! Please pass my thanks on behalf of TCDC, to the Life Stylers for their time and effort that has gone into decorating it."



### EVENTS

#### MARCH

8-9th Extravaganza Fair, Danby Field



#### APRIL

17th Easter Scavenger Hunt  
@ Wires Road Farm



### WALKING GROUP



**TUESDAY**

10:30am and 4:30pm  
Come and join Jane G

#### MAY

14th - 24th  
Thames Music & Drama  
School of Rock



### BIKE GROUP

**FRIDAY 3pm**  
Bike ride with Steve C



#### JUNE

**Matariki**  
Hangi & Tree planting  
@ Wires Road Farm



### SOME HIGHLIGHTS



Christmas party



Santa at the Christmas Party



Simon A at Fun on the Farm

